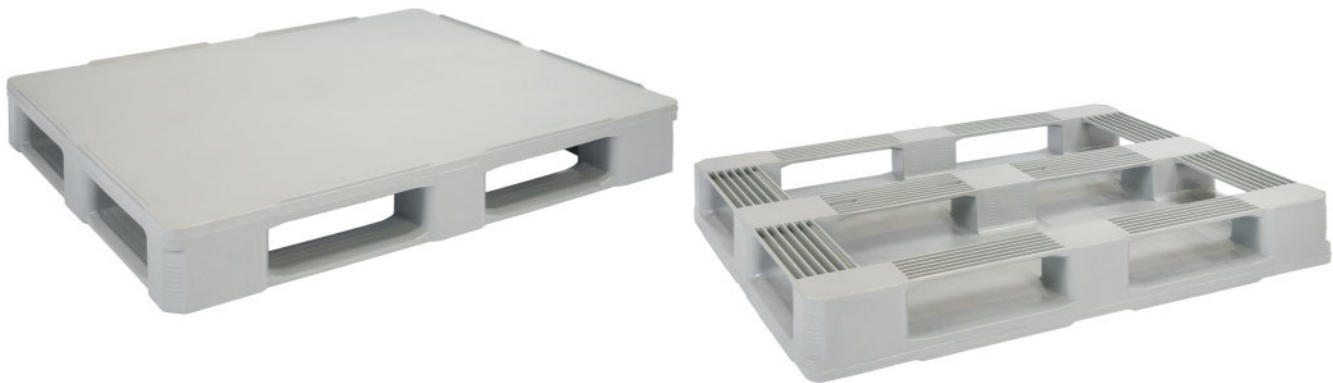


▶ HP1210/5R/5P

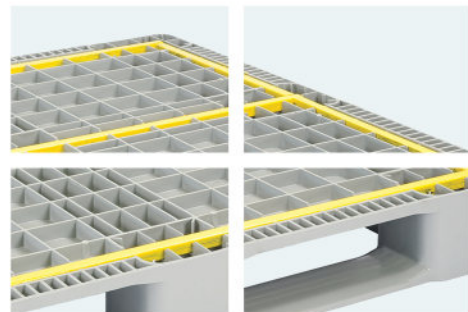
Hygienic Plastic Pallet (Reinforced)



Specifications:

Material	Virgin HDPE Inj. grade + UV Stabilizer
Dimension	1200 x 1000 x 160 mm (±5 mm)
Static Load	7500 Kg
Dynamic Load	2000 Kg
Racking Load	2000 Kg
Pallet Weight	29 Kg (±3%)
40' HC Cntr/88 m ³ TRK Capacity	364 / 428 Pcs

More details:



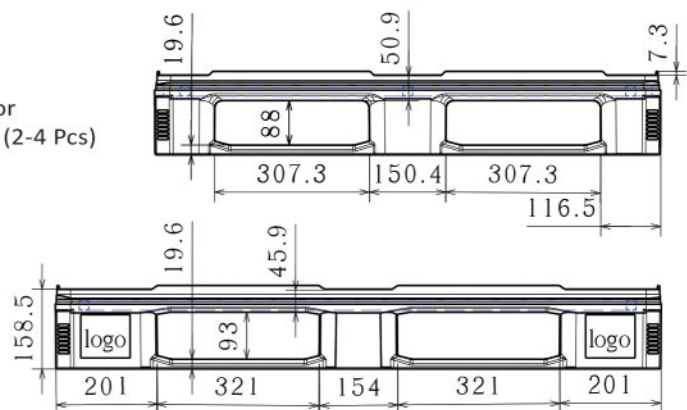
The load capacities are based on evenly distributed loads.

Properties:

- Single surface
- Closed solid top deck
- 5 reinforcement profiles
- 7 mm safety rims
- 5 skid runners
- 4-way entry
- Forklift / Hand-jack Compatible
- Welded
- Stackable

Customization:

- Any standard RAL color
- Anti-slip strips option (2-4 Pcs)
- Safety rims
- Embossing logo
- Printing logo



All dimensions may vary ±5 mm due to the production process & raw material characteristics.

